

FUNDAMENTALS OF

# Automotive Technology Online

**CDX** Learning Systems™

## Add Instructor Created Resources

*Instructor Training Series*

## Topics covered in this tutorial:

- How to add instructor created resources in your CDX courses.

### Need further instruction?

Visit <http://www.cdxauto.com/TrainingLibrary>

### Need support?

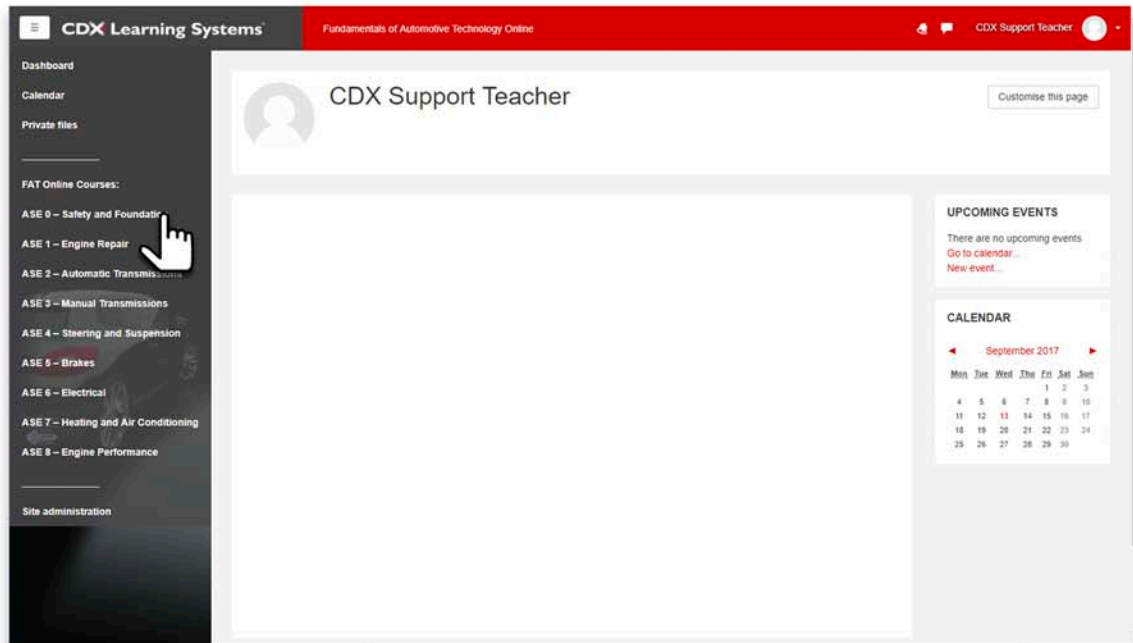
Contact the CDX Support Helpdesk

Email: [cdxsupport@partnerinpublishing.com](mailto:cdxsupport@partnerinpublishing.com)

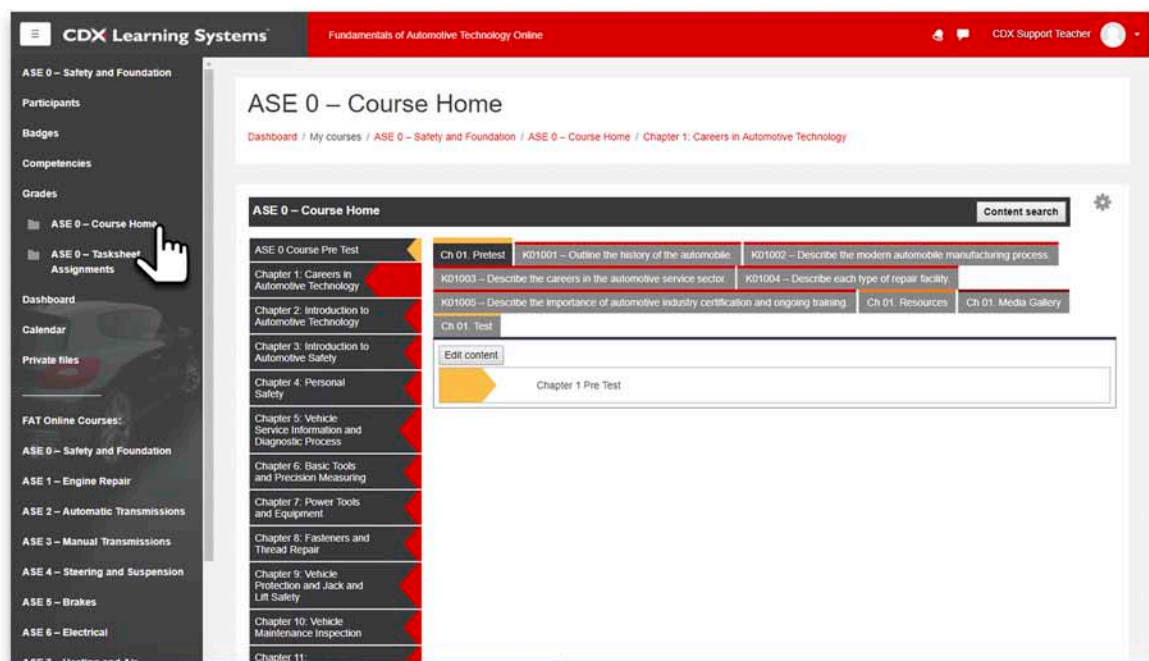
Phone: 1-844-273-7537

Begin by logging into your account at [cdxauto.com](http://cdxauto.com) and navigating to your CDX product.

Then, click on the course you would like to add resources to from the navigation on the left.

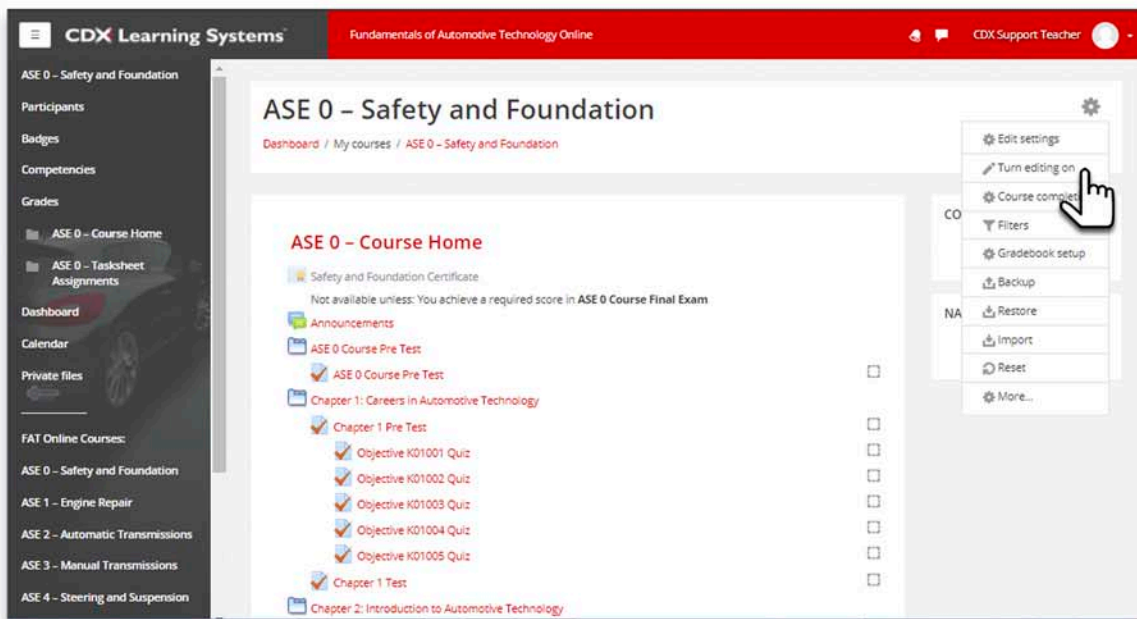


Then, from that same navigation, click on the new Course Home button.

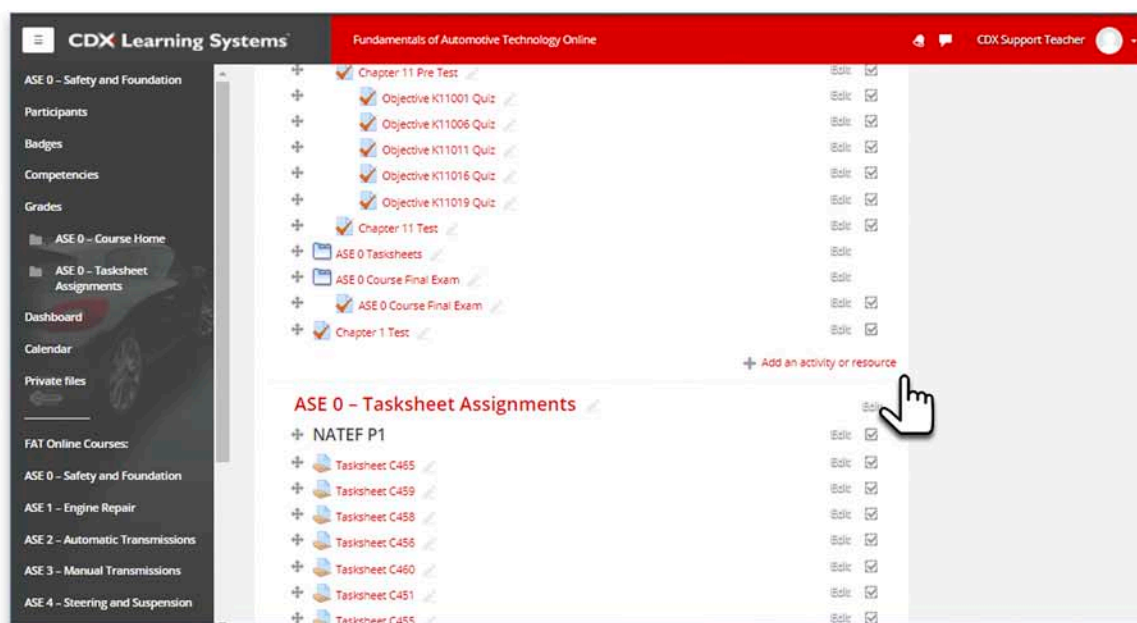


At the top right of the Course Home page, find and click on the gear icon. Then select Turn Editing On.

The page will reload and will now include more editing options in your course.

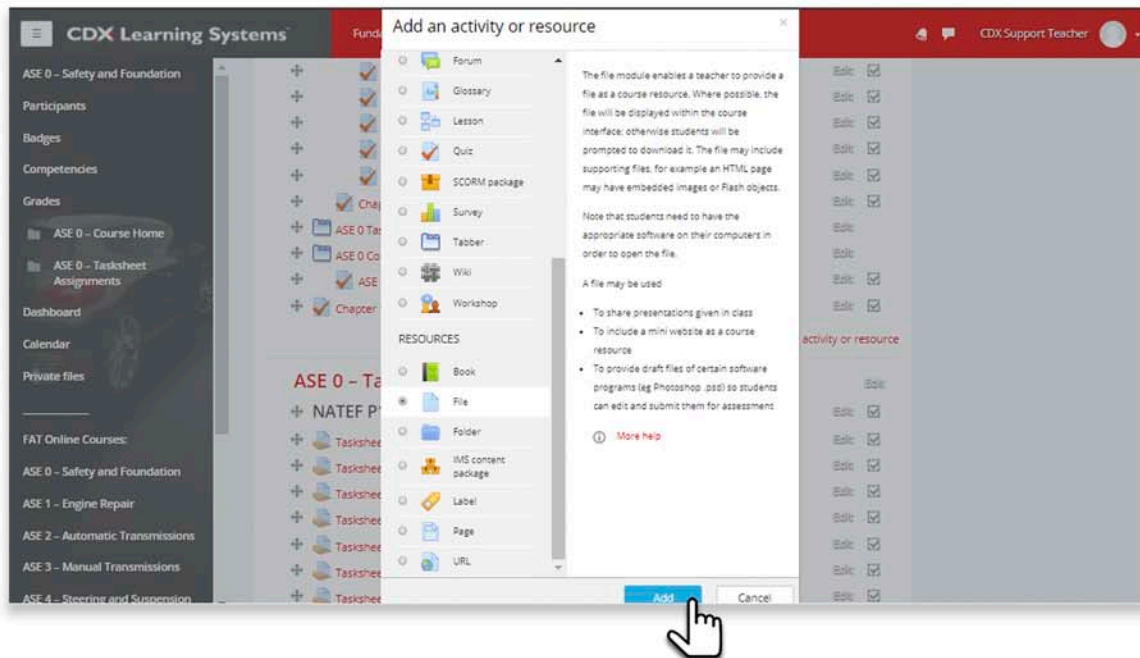


Find the section that you would like to add resources to, and click on the Add an Activity or Resource option.

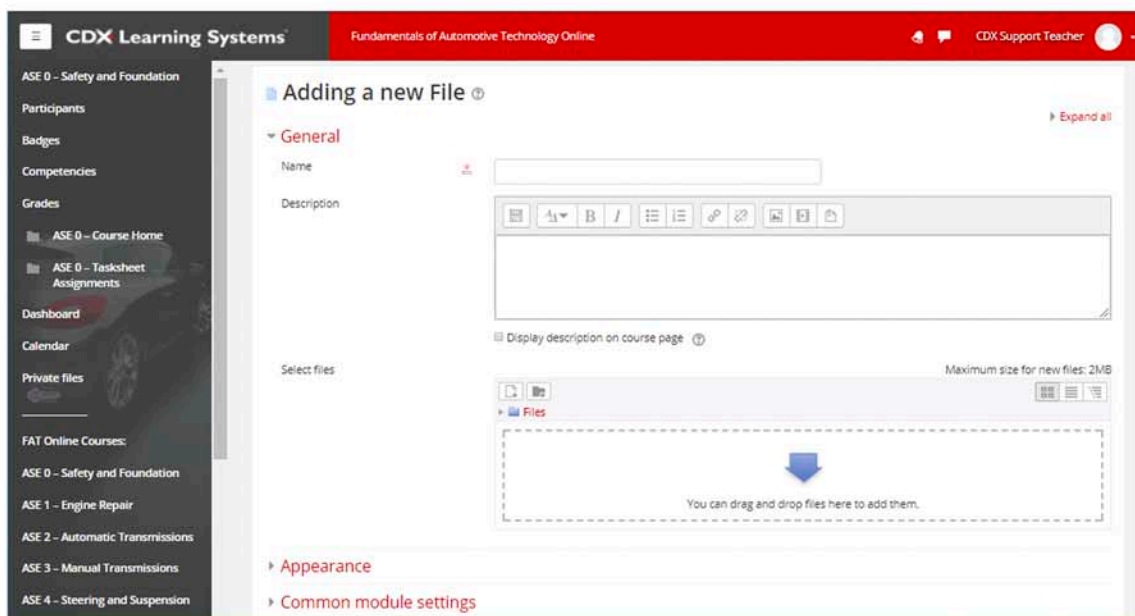


A window will appear with a list of resources that you can add to your course.

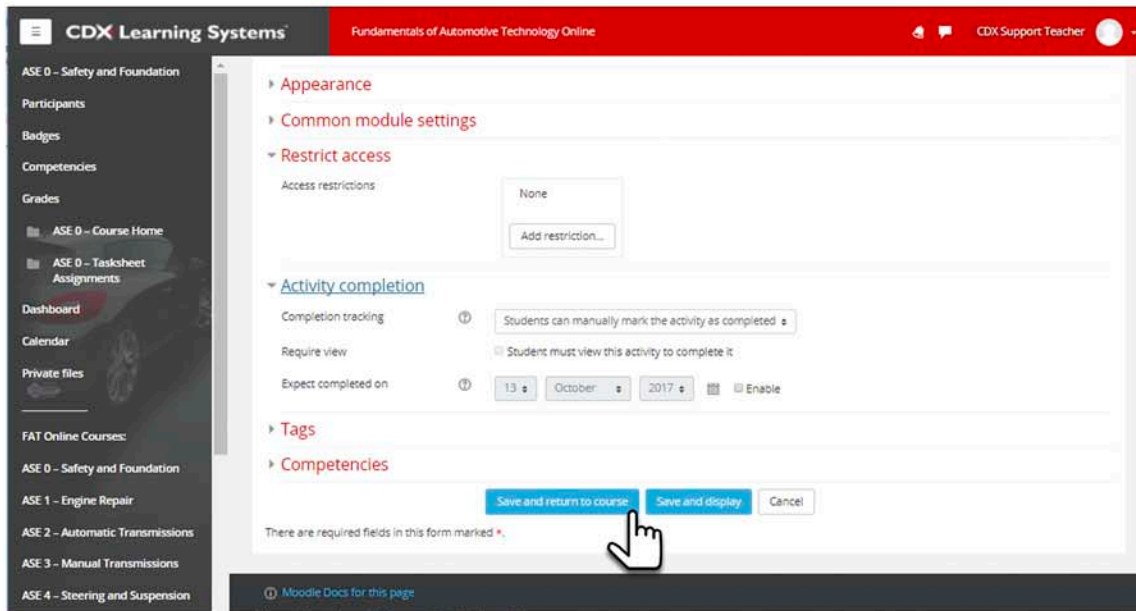
To add a resource, select the type of resource you would like to add and then click the Add button.



From this page you can give your resource a name and description, and in this case upload your file. If you would like to modify any settings for this resource such as restricting access or changing its appearance you can also do so from this page.

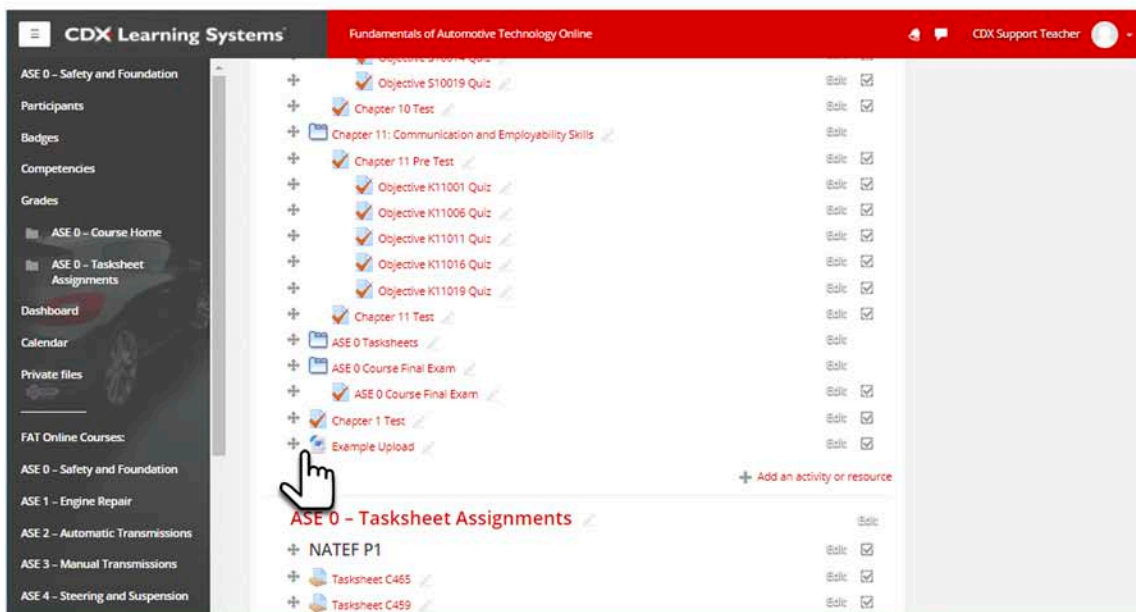


Once you have added your resource and set any settings, click **Save and Return to Course**. Your resource will be added and you will be brought back to the Course Home page.



Your resource will be added and you will be brought back to the Course Home page.

You will now see your resource listed in that course.



**Tip/Trick:** To move your newly created resource, click the + on the left of the title, and drag it to a new location.